



Ssc Cgl Tier I Previous Year Question Paper Overview

Here, you can solve all the questions asked in Ssc Cgl Tier I Previous Year Question Paper on 2021-08-16 in the Morning exam. The detailed solutions are also provided for every previous year question and some of these questions can be asked again in your Ssc Cgl Tier I exam. There are 100 questions in the exam and 60 minutes are provided for the Ssc Cgl Tier I exam. The Cutoff of the exam was 140 marks hence you should try to score at least 150 marks.

Ssc Cgl Tier I Previous Year Question Paper : Questions and Solutions

Question 1 :

Select the most appropriate meaning of the given idiom. To cut a long story short

Difficulty : Moderate

Average Time : 42 Seconds

Options :

1. Tell something briefly
2. Like to tell long stories
3. Tell something in a roundabout way
4. Like to tell short stories

Solution :

The correct answer is **option 1** i.e. **Tell something briefly**

The meaning of the given idiom **to cut a long story short** is **tell something briefly**.

Hence, option 1 will be the correct answer.

Question 2 :

On selling an article for Rs 246.80, the gain is 20% more than the amount of loss insured on selling it for Rs. 216. If the articles is sold for Rs. 220.75, then what is the gain/loss percent (correct to nearest integer)?

Difficulty : Moderate

Average Time : 51 Seconds

Options :



Profit 7%

2. Loss 5%

3. Loss 4%

4. Profit 3%

Solution :

The correct answer is **option 3** i.e. **Loss 4%**

Given :

Profit when sold for Rs 246.80

Loss when sold for Rs 216

Gain is 20% more than loss

Formula used :

$$\text{Loss} = \text{Cost price} - \text{selling price} \quad \text{---- (1)}$$

$$\text{Profit} = \text{Selling price} - \text{Cost price} \quad \text{----- (2)}$$

$$\text{Loss\%} = (\text{Cost price} - \text{selling price}) / (\text{Cost price}) \times 100$$

Calculations :

let the cost price of the article be x

Using equation (1), we get

$$\text{Loss} = x - 216$$

Using equation (2), we get

$$\text{Profit} = 246.80 - x$$

According to the question

$$(246.80 - x) = (120/100) \times (x - 216)$$

$$2468 - 10x = 12x - 2592$$

$$22x = 5060$$

$$x = 230$$

Cost price of the article is 230



Now, we have Selling price of the article = 220.75

$$\text{Loss} = 230 - 220.75$$

9.25

Using equation (3), we get

$$\text{Loss \%} = (9.25/230) \times 100$$

4.021

4 %

Question 3 :

Which two numbers should be interchanged to make the given equation correct? $36 \times 81 \div 9 - (88 \div 4) + 14 + (22 + 7) = 169$

Difficulty : Moderate

Average Time : 80 Seconds

Options :

1. 36 and 14
2. 81 and 36
3. 3. 9 and 36
4. 4. 14 and 22

Solution :

The correct answer is **Option 1** i.e. **36 and 14**

Understanding



Given equation:

$$36 \times 81 \div 9 - (88 \div 4) + 14 + (22 + 7) = 169$$

Let's see all the options:

Option 1: Interchange 36 and 14

$$14 \times 81 \div 9 - (88 \div 4) + 36 + (22 + 7) = 169$$

$$14 \times 9 - 22 + 36 + 29 = 169$$

$$126 - 22 + 65 = 169$$

$$191 - 22 = 169$$

$$169 = 169$$

Option 2: Interchange 81 and 36

$$81 \times 36 \div 9 - (88 \div 4) + 14 + (22 + 7) = 169$$

$$81 \times 4 - 22 + 14 + 29 = 169$$

$$324 - 22 + 43 = 169$$

$$367 - 22 = 169$$

$$345 \quad 169$$

Option 3: Interchange 9 and 36

$$9 \times 81 \div 36 - (88 \div 4) + 14 + (22 + 7) = 169$$

$$9 \times 2.25 - 22 + 14 + 29 = 169$$

$$20.25 - 22 + 43 = 169$$

$$63.25 - 22 = 169$$

$$41.25 \quad 169$$

Option 4: Interchange 14 and 22

$$36 \times 81 \div 9 - (88 \div 4) + 22 + (14 + 7) = 169$$

$$36 \times 9 - 22 + 22 + 21 = 169$$

$$324 + 21 = 169 \quad (-22 \text{ and } +22 \text{ becomes } 0)$$

$$345 \quad 169$$

Hence, we find that **Option 1** is the correct answer.

Question 4 :

Read the given statements and conclusions carefully. Assuming that the information given in the statements is true, even if it appears to be at variance with commonly known facts, decide which of the given conclusions logically follow(s) from the statements. Statements: No bank is an office. All offices are stalls. Conclusions: I. No bank is a stall. II. No stall is a bank. III. Some stalls are offices. IV. All the stalls are offices.

Difficulty : Moderate

Average Time : 96 Seconds

Options :

1. Only conclusion I follows
2. Both conclusions I and II follow
3. Only conclusion III follows
4. Both conclusions I and IV follow

Solution :

The correct answer is **Option 3** i.e. **Only Conclusion III follows**

The least possible Venn diagram for the given statements is shown below:



Conclusions:

- I. No bank is a stall **False** (It is possible but not definite)
II. No stall is a bank **False** (It is possible but not definite)
III. Some stalls are offices **True** (As it is given that all offices are stalls so, some stalls are definitely offices)
IV. All the stalls are offices **False** (It is possible but not definite)

Hence, **Only conclusion III follows.**

Question 5 :

The sequence of folding a piece of paper and the manner in which the folded has been cut is shown in the following

figures. How would this paper look when unfolded ?

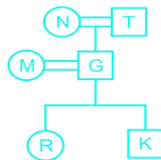
Difficulty : Moderate

Average Time : 78 Seconds

Options :

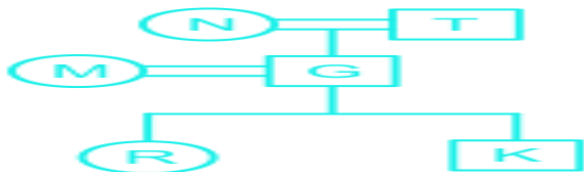
- 1.
- 2.
- 3.
- 4.

Solution :



The correct answer is **Option 4** i.e.

The method of unfolding the paper will be exactly reverse of the way in which it was folded.



Question 6 :

Four words have been given, out of which three are alike in some manner and one is different. Select the word that is different.

Difficulty : Moderate

Average Time : 68 Seconds

Options :

1. Empathy
2. Envy
3. Jealousy
4. Hatred

Solution :

The correct answer is **Option 1** i.e. **Empathy**

Understanding

Envy, jealousy and hatred have the same meaning whereas empathy is opposite to it.

Hence, **Empathy** is the correct answer.

Question 7 :

Select the correct mirror image of the given combination when the mirror is placed at MN as shown.

Difficulty : Moderate

Average Time : 50 Seconds

Options :

- 1.
- 2.
- 3.
- 4.

Solution :

The correct answer is **Option 1** i.e.

Understanding

Since the mirror is placed on the right side of the image, the image will get horizontally inverted to form the mirror image. This means that the left side of the image will become the right side and vice-versa.

The correct mirror image of the given figure when mirror is placed at MN is shown below:



Thus, **Option 1** is the correct answer.

Question 8 :

Study the given pattern carefully and select the number that can replace the question mark (?) in it. 14 16 13 18 6 ? 12 21 17

Difficulty : Moderate

Average Time : 90 Seconds

Options :

1. 8
2. 6
3. 5
4. 7

Solution :

The correct answer is **Option 3** i.e. 5

In every row,

$$3\text{rd number} = (1\text{st number} \div 2 + 2\text{nd number}) - 10$$

1st row:

$$(14 \div 2 + 16) - 10$$

$$= 7 + 16 - 10$$

$$= 13$$

3rd row:

$$\begin{aligned} &(12 \div 2 + 21) - 10 \\ &= 6 + 21 - 10 \\ &= 17 \end{aligned}$$

Similarly,

2nd row :

$$\begin{aligned} &(18 \div 2 + 6) - 10 \\ &= 9 + 6 - 10 \\ &= 5 \end{aligned}$$

Hence, the correct answer is **5**.

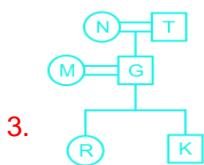
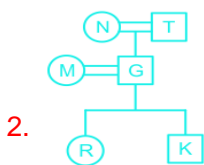
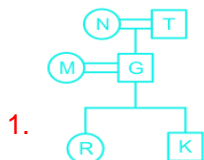
Question 9 :

Select the Venn diagram that best illustrates the relationship between the following classes. Coriander seeds, Spices, Cinnamon

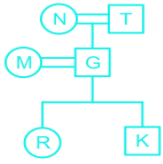
Difficulty : Moderate

Average Time : 56 Seconds

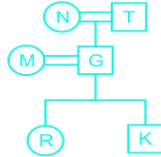
Options :



4.



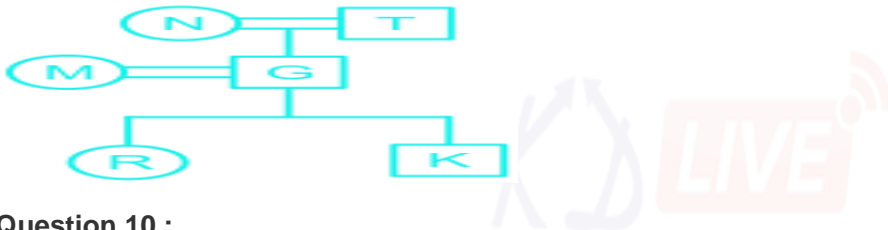
Solution :



The correct answer is **Option 4** i.e.

Coriander seeds and Cinnamon are two different spices.

Thus, **option 4** represents the best relationship between the given entities, as shown below:



Question 10 :

Select the number from among the given options that can replace the question mark (?) in the following series. 10, 22, 35, 40, 72, 40, ?

Difficulty : Moderate

Average Time : 68 Seconds

Options :

- 1. 143
- 2. 131
- 3. 134
- 4. 133

Solution :

The correct answer is **Option 4** i.e. **133**

Understanding	Application
---------------	-------------

$22 - 10 = 12$	
$35 - 22 = 13$	
$40 - 35 = 5$	
$72 - 40 = 32$	
$40 - 72 = -32$	
Now,	
$13 - 12 = (1)^3$	
$5 - 13 = -8 = (-2)^3$	
$32 - 5 = 27 = (3)^3$	
$-32 - 32 = -64 = (-4)^3$	
	Following the same pattern,
	$133 - 40 = 93$
	Now,
	$93 - (-32) = 93 + 32 =$ 125
	$125 = (5)^3$
	Hence, the missing number is 133

Question 11 :

In a certain code language, 'PRINT' is written as 'YMNIU'. How will 'MAGIC' be written in that language?

Difficulty : Moderate**Average Time : 69 Seconds****Options :**

1. HDLVR
2. HRLZR
3. HRLRZ
4. HLDREV

Solution :

The correct answer is **Option 2** i.e. **HRLZR**

PRINT is written as YMNIU :

1. 1st, 3rd, and 5th letters are reversed in their positions with an addition of 5.

$P + 5 = U$ (1st letter is reversed with 5th letter)

$I + 5 = N$ (3rd letter is reversed with 3rd letter)

T + 5 = Y (5th letter is reversed with 1st letter)

2. 2nd and 4th letters are reversed with their equivalent opposite letters in the alphabet series.

R is placed just opposite I and N is opposite M.

Similarly,

MAGIC will be written as :

M + 5 = R (1st letter reversed with 5th letter)

G + 5 = L (3rd letter reversed with 3rd letter)

C + 5 = H (5th letter reversed with 1st letter)

Now,

A is placed just opposite Z and I is placed just opposite R

Hence, the code for MAGIC will be **HRLZR**.

Positional values of the English Alphabets:

A	B	C	D	E	F	G	H	I	J	K	L	M
1	2	3	4	5	6	7	8	9	10	11	12	13
26	25	24	23	22	21	20	19	18	17	16	15	14
Z	Y	X	W	V	U	T	S	R	Q	P	O	N

Hence, the correct answer is **HRLZR**.

Question 12 :

Select the correct option that indicates the arrangement of the given words in the order in which they appear in an English dictionary 1. Sorting 2. Solitary 3. Solution 4. Sophisticate 5. Solvent

Difficulty : Moderate

Average Time : 140 Seconds

Options :

1. 2, 3, 5, 4, 1
2. 2, 3, 1, 4, 5
3. 2, 4, 1, 3, 5
4. 2, 5, 3, 4, 1

**Solution :**

The correct answer is **Option 1** i.e. **2, 3, 5, 4, 1**

The correct arrangement of given words as given in the dictionary is shown below :

2. **Solitary**
3. **Solution**
5. **Solvent**
4. **Sophisticate**
1. **Sorting**

Hence, **2, 3, 5, 4, 1** is the correct answer.

Question 13 :

Select the letter-cluster from among the given options that can replace the question mark (?) in the following series.
THME, WKJB, ZNGY, CQDV, ?

Difficulty : Moderate

Average Time : 49 Seconds

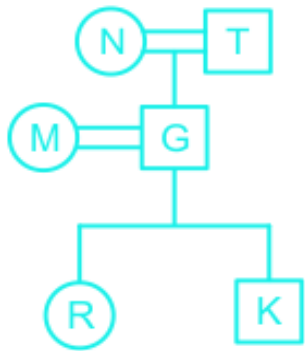
Options :

1. FTAR
2. FTBS
3. FUAS
4. FTAS

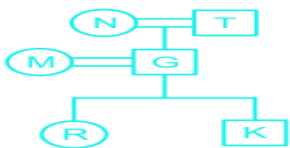
Solution :

The correct answer is **Option 4** i.e. **FTAS**

The pattern of the following series is :



Similarly,



Therefore, the correct answer is **FTAS**

Question 14 :

Select the combination of letters that when sequentially placed in the blanks of the given series will complete the series. U A _ B _ T U _ C B D _ _ A C B _ T U A C _ _ T

Difficulty : Moderate

Average Time : 56 Seconds

Options :

1. C, D, A, U, U, D, B, D
2. C, D, A, T, U, D, C, D
3. D, C, A, T, U, D, D, B
4. C, D, A, T, U, D, B, D

Solution :

The correct answer is **Option 4** i.e. **C, D, A, T, U, D, B, D**

Given Series : U A _ B _ T U _ C B D _ _ A C B _ T U A C _ _ T

Let's put all the options in the series and check:

Option 1: U A **C B D** T U A C B D **U U** A C B D T U A C B D T

It doesn't follow any pattern.

Option 2 : U A C B D T U A C B D T U A C B D T U A C C D T

It doesn't follow any pattern.

Option 3 : U A D B C T U A C B D T U A C B D T U A C D B T

It doesn't follow any pattern.

Option 4 : U A C B D T U A C B D T U A C B D T U A C B D T

We can divide the series in 4 parts and see that it follows a pattern.

Hence, **C, D, A, T, U, D, B, D** is the correct answer.

Question 15 :

Which of the following is NOT a feature of food security?

Difficulty : Moderate

Average Time : 111 Seconds

Options :

1. Acceptability
2. Affordability
3. Accessibility
4. Availability

Solution :

The correct answer is **option 1** i.e. **Acceptability**.

- The National Food Security Act was passed by the Parliament on 10th September 2013, with the objective to provide food and nutritional security in the human life cycle approach, by ensuring access to adequate quantities of quality food at affordable prices for people to live a life with dignity.
- The Act provides for coverage of up to 75% of the rural population and up to 50% of the urban population for receiving subsidized foodgrains under Targeted Public Distribution System(TPDS).

Question 16 :

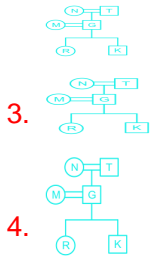
Select the option that is embedded in the given figure (rotation in NOT allowed).

Difficulty : Moderate

Average Time : 53 Seconds

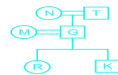
Options :

- 1.

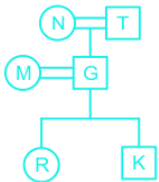


Solution :

The correct answer is **Option 1** i.e.



The figure given in option 1 is embedded in the question figure, as shown below:



Question 17 :

Select the option that is related to the third word in the same way as the second word is related to the first word. Leaves : Rustle :: Owl : ?

Difficulty : Moderate

Average Time : 69 Seconds

Options :

1. hoot
2. doing quai-quai
3. Tweet
4. grunt

Solution :

The correct answer is **Option 1** i.e. **hoot**.

Understanding	Application
---------------	-------------

Rustle is the sound made by dry leaves.	Similarly, hoot is the sound made by owl. Hence, Hoot is the correct answer.
---	--

Question 18 :

Four letter-clusters have been given, out of which three are alike in some manner and one is different. Select the letter-cluster that is different.

Difficulty : Moderate

Average Time : 54 Seconds

Options :

1. DFBA
2. RTPO
3. LNJI
4. FHDB

Solution :

The correct answer is **Option 4** i.e. **FHDB**

Understanding

Let's see all the options :

1. DFBA : $D + 2 = F$; $F - 4 = B$; $B - 1 = A$
2. RTPO : $R + 2 = T$; $T - 4 = P$; $P - 1 = O$
3. LNJI : $L + 2 = N$; $N - 4 = J$; $J - 1 = I$
4. **FHDB** : **$F + 2 = H$** ; **$H - 4 = D$** ; **$D - 1 = C$**

Hence, **FHDB** is different letter-cluster.

**Question 19 :**

Select the option that is related to the third number in the same way as the second number is related to the first number.

16 : 144 :: 28 : ?

Difficulty : Moderate

Average Time : 63 Seconds

Options :

1. 263
2. 420
3. 364
4. 544

Solution :

The correct answer is **Option 2** i.e. **420**

Understanding	Application
$16 : 144$ $= 16 \times (16 \div 2) + 16$ $= 16 \times 8 + 16$ $= 128 + 16$ $= 144$	Similarly, $28 \times (28 \div 2) + 28$ $= 28 \times 14 + 28$ $= 392 + 28$ $= 420$ Hence, 420 is the correct answer.

Question 20 :

Four number-pairs have been given, out of which three are alike in some manner and one is different. Select the number-pair that is different.

Difficulty : Moderate

Average Time : 57 Seconds

**Options :**

1. 15 : 197
2. 25 : 167
3. 27 : 181
4. 21 : 139

Solution :

The correct answer is **Option 1** i.e. **15: 197**

Logic :

1st number $\times 7 - 8 =$ 2nd number

We can apply this logic to all numbers and see the result.

1. $15 \times 7 - 8 = 105 - 8 = 97$
2. $25 \times 7 - 8 = 175 - 8 = 167$
3. $27 \times 7 - 8 = 189 - 8 = 181$
4. $21 \times 7 - 8 = 147 - 8 = 139$

All three are the same except for 1st option.

Hence, the correct answer is **15: 197**.

Question 21 :

Select the boxes that can be formed by folding the given sheet along the lines.

Difficulty : Moderate

Average Time : 51 Seconds

Options :

1. Only B and C
2. Only C and D
3. Only A, C and D
4. Only A and C

Solution :

The correct answer is **Option 4** i.e. **Only A and C.**

When the unfolded dice is folded, the faces opposite to each other is:

3 is opposite to 5

6 is opposite to 2

4 is opposite to 1

The dice A and D cannot be formed when the given sheet is folded because the opposite faces appear together in these dice.

Only dice A and C can be formed by folding the sheet.

Hence, the correct answer is **Only A and C.**

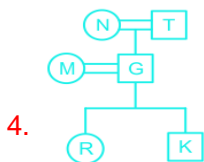
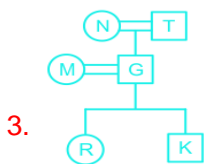
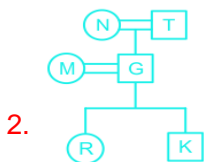
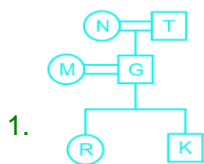
Question 22 :

Select the figures from among the given option that can replace the question mark (?) in the following series.

Difficulty : Moderate

Average Time : 59 Seconds

Options :



Solution :

The correct answer is **Option 1**

Understanding

In the given series, figures in the middle are shifted to corner and figures in corner are shifted to middle position in anti-clockwise direction and change into a new figure.



Hence, option 1 is correct answer.

Question 23 :

What was the day of the week on 17 April 2014?

Difficulty : Moderate

Average Time : 75 Seconds

Options :

1. Saturday
2. Thursday
3. Friday
4. Wednesday

Solution :

The correct answer is **option 2** i.e. **Thursday**

Day Code

Day	Sun	Mon	Tue	Wed	Thu	Fri	Sat
Code	0 or 7	1	2	3	4	5	6

17th April, 2014 = 2013 years + Number of days from 1.1.2014 to 17.04.2014

Odd days in 1600 years = 0

Odd days in 400 years = 0

13 years = (10 ordinary years + 3 leap years) = (10 x 1 + 3 x 2) = 16/7 ; R = 2

Therefore, the number of Odd days = 2

Jan Feb Mar Apr

31 + 28 + 31 + 17 = 107 days

Therefore, 107 days = (15 weeks + 2 days) --> 2 odd days

Total number of odd days = (0 + 0 + 2 + 2) = 4 odd days

Thus, the day is **Thursday**

Question 24 :

Identify the option word-pair having the same relation which is given in the question's word-pair. Angry : Feeling

Difficulty : Moderate

Average Time : 73 Seconds

Options :

1. Bicycle : Road
2. Pomegranate : Fruit
3. Television : Entertainment
4. Mattress : Bed

Solution :

The correct answer is **Option 2** i.e. **Pomegranate : Fruit**

Understanding	Application
Anger is an emotion	Similarly, Pomegranate is a fruit.

Hence, the correct answer is **Pomegranate : Fruit**.

Question 25 :

Select the option in which the numbers are related in the same way as are the numbers of the following set. (6, 9, 45)

Difficulty : Moderate

Average Time : 52 Seconds

Options :

(8, 10, 36)

2. (2, 8, 46)

3. (7, 4, 48)

4. (6, 8, 60)

Solution :

The correct answer is **Option 1** i.e. **(8, 10, 36)**

Understanding	Application
Logic : (1st number + 2nd number) × (2nd number - 1st number) = Third Number (6 + 9) × (9 - 6) = 45	Similarly, (8 + 10) × (10 - 8) = 36 Therefore, (8, 10, 36) is the right option.

Question 26 :

How many triangles are there in the given figures ?

Difficulty : Moderate

Average Time : 53 Seconds

Options :

1. 17

2. 18

3. 15

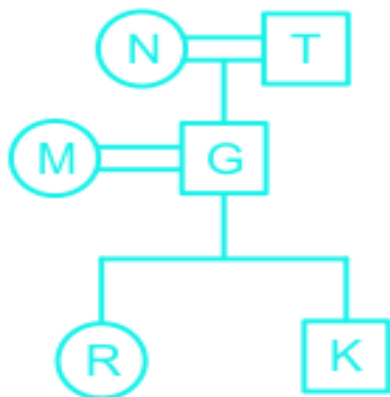
4. 16

Solution :

The correct answer is **Option 1** i.e. **17**

Understanding

The total number of triangles in the question figure is as shown below:



There are **17** triangles: ACD, ABC, BCD, ABD, ALD, DLC, BLC, ALB, BHK, BIJ, BMK, BNJ, BMH, BNI, CEG, CEF, CFG

Question 27 :

'A # B' means 'A is the son of B'. 'A @ B' means 'A is the mother of B'. 'A & B' means 'A is the wife of B'. 'A % B' means 'A is the sister of B'. If 'M @ R % K # G # N & T', then which of the following statements is NOT correct?

Difficulty : Moderate

Average Time : 70 Seconds

Options :

1. M is the mother of K.
2. R is the daughter of G.
3. T is the paternal grandfather of M.
4. N is the paternal grandmother of K.

Solution :

The correct answer is **Option 3** i.e. **T is the paternal grandfather of M.**

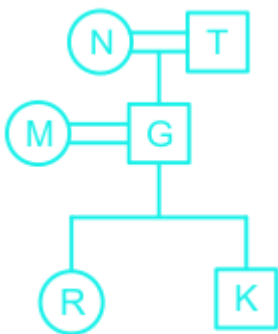
Understanding

M @ R % K # G # N & T :

1. M is mother of R
2. R is sister of K
3. K is son of G
4. G is son of N
5. N is wife of T

Symbol in Diagram	Meaning
○	Female
□	Male
==	Married Couple
—	Siblings
	Difference of A Generation

Now , we can show the relation through a flowchart.



Hence, all the options are correct except 3rd one, i.e. **T is the paternal grandfather of M.**

**Question 28 :**

In a certain code language, 'FRENCH' is coded as '114' and 'LOSS' is coded as '47'. How will 'COURSE' be coded in that language?

Difficulty : Moderate**Average Time : 82 Seconds****Options :**

1. 103
2. 87
3. 120
4. 81

Solution :

The correct answer is **Option 2** i.e. **87**

Code for FRENCH: Sum of reverse positional values of Alphabets + Number of Alphabets

F - 21

R - 9

E - 22

N - 13

C - 24

H - 19

Code for Word : $21 + 9 + 22 + 13 + 24 + 19 + 6 = 114$

Code for LOSS: Sum of reverse positional values of Alphabets + Number of Alphabets

L - 15

O - 12

S - 8

S - 8

Code for Word : $15 + 12 + 8 + 8 + 4 = 47$

Similarly for COURSE,

C - 24

O - 12

U - 6

R - 9

S - 8

E - 22

Code for Word : $24 + 12 + 6 + 9 + 8 + 22 + 6 = 87$

Positional values of the English Alphabet:

A	B	C	D	E	F	G	H	I	J	K	L	M
1	2	3	4	5	6	7	8	9	10	11	12	13
26	25	24	23	22	21	20	19	18	17	16	15	14
Z	Y	X	W	V	U	T	S	R	Q	P	O	N

Hence, the correct answer is **87**.**Question 29 :**

According to the Puranas, Lord Vishnu took the shape of _____ in order to rescue the earth, which had sunk into the water.

Difficulty : Moderate

Average Time : 122 Seconds

Options :

1. A lion
2. An elephant
3. A boar
4. A tiger

Solution :The correct answer is **option 3** i.e. **A boar**.

- According to the Puranas, Lord Vishnu is known as Varaha Avatar, wherein he appeared as a **wild boar** to save Mother Earth from the clutches of a demon called Hiranyaksha, who had stolen the planet.

Question 30 :

Page No: 27

Follow us on



Address : 1997, Mukherjee Nagar, 110009

Email : online@kdcampus.org

Call : +91 95551 08888

Download the App





Halogens have _____ electrons in their outermost shells.

Difficulty : Moderate

Average Time : 42 Seconds

Options :

1. Six
2. Eight
3. Five
4. Seven

Solution :

The correct answer is **option 4** i.e. **Seven**.

- The number of electrons present in the outermost shell of halogens is **seven**.
- Halogens belong to the 17th group and lie before inert gases. Some examples of halogens are fluorine and chlorine.

Question 31 :

Which of the following states' former Governor, Mata Prasad, died in January 2021?

Difficulty : Moderate

Average Time : 42 Seconds

Options :

1. Goa
2. Uttarakhand
3. Arunachal Pradesh
4. Uttar Pradesh

Solution :

The correct answer is **option 3** i.e. **Arunachal Pradesh**.

- Mata Prasad, who was the former Governor of **Arunachal Pradesh** and senior Congress leader died at Sanjay Gandhi Post Graduate Institute of Medical Sciences in 2021.

Question 32 :

Who among the following was the Nizam of Hyderabad in 1947?

Difficulty : Moderate

Average Time : 39 Seconds

Options :



Osman Ali

2. Akbar Ali Khan

3. Mir Mahbub Ali Khan

4. Nasir Jung

Solution :

The correct answer is **option 1** i.e. **Osman Ali**.

- **Osman Ali Khan** was the Nizam of Hyderabad, a princely state in India in the period 1911-48, and its constitutional president until 1956.
- He was also the last Nizam to rule the princely state of Hyderabad and he is popularly known as the 'Architect of Modern Hyderabad'.

Question 33 :

Which of the following Articles of the Constitution of India provides for the creation of a GST Council?

Difficulty : Moderate

Average Time : 49 Seconds

Options :

1. Article 246A

2. Article 323A

3. Article 279A

4. Article 269A

Solution :

The correct answer is **option 3** i.e. **Article 279A**.

- As per Article 279A(1) of the amended constitution, the GST Council has to be constituted by the President within 60 days of the commencement of Article 279 A.
- As per **Article 279A**, the GST Council which will be a joint forum of the centre and the states, shall consists of the following members-Union finance minister as the chairman, the Union minister of State and the Minister-in-charge of finance or taxation.

Question 34 :

Which of the following is a work on statecraft written by Krishnadevaraya?

Difficulty : Moderate

Average Time : 52 Seconds

Options :

Tolkappiyam

2. Amuktamalyada

3. Kadambari

4. Karpuramanjari

Solution :

The correct answer is **option 2** i.e. **Amuktamalyada**.

- The book '**Amuktamalyada**' is a Telugu epic poem composed by Krishnadevaraya, the Vijayanagara emperor in the early 16th century.
- Considered as a masterpiece, the poem describes the story of the wedding of the Hindu Lord Ranganayaka, an avatar of Lord Vishnu and Goda Devi.

Question 35 :

Who among the following never became the Vice President of India?

Difficulty : Moderate

Average Time : 44 Seconds

Options :

1. VV Giri
2. BD Jatti
3. Gulzarilal Nanda
4. Zakir Husain

Solution :

The correct answer is **option 3** i.e. **Gulzarilal Nanda**.

- **Gulzarilal Nanda** never became the Vice President of India.
- Nanada was an Indian politician and economist who specialized labour issues. He served as the interim Prime Minister of India for two 13-day stints following the deaths of Jawaharlal Nehru in 1964 and Lal Bahadur Shastri in 1996 respectively.

Question 36 :

How many trains were flagged off by Prime Minister Narendra Modi in January 2021 connecting the location of the Statue of Unity to different parts of India?

Difficulty : Moderate

Average Time : 50 Seconds

Options :



Five

2. Eight

3. Six

4. Seven

Solution :

The correct answer is **option 2** i.e. **Eight**.

- The Prime Minister Narendra Modi in the year 2021 flagged off **eight trains** connecting different regions of the country to Kevadiya with an aim to facilitate seamless connectivity to the statue of Unity in Gujarat.

Question 37 :

Which of the following is the meaning of 'Pishtaq' in the context of medieval Indo-Islamic architecture?

Difficulty : Moderate

Average Time : 43 Seconds

Options :

1. Tall gateway
2. Water tank
3. Dome
4. True arch

Solution :

The correct answer is **option 1** i.e. **Tall gateway**.

- The term 'Pishtaq' in the context of medieval Indo-Islamic architecture, refers to a **tall gateway**.
- It is a Persian term for a portal projecting from the facade of a building, usually decorated with calligraphy bands, glazed tilework, and geometric designs.

Question 38 :

Which of the following locations has the highest altitude?

Difficulty : Moderate

Average Time : 44 Seconds

Options :

1. Moradabad
2. Patna



Kolkata

4. Ranikhet

Solution :

The correct answer is **option 4** i.e. **Ranikhet**.

- Among the following locations, **Ranikhet** has the highest altitude.
- Ranikhet is a hill station in the state of Uttarakhand with an elevation of 1,869 m(6,132 ft.) above sea level and within sight of the western peaks of the Himalayas.
- Ranikhet is home to the Military Hospital, Kumaon Regiment(KRC) and Naga Regiment and is maintained by the Indian Army.

Question 39 :

Who among the following was appointed as the Chairman and Managing Director of Telecommunications Consultants India Limited in January 2021?

Difficulty : Moderate

Average Time : 51 Seconds

Options :

1. Jitendra Singh
2. Rajeev Kumar
3. Sanjeev Kumar
4. Sarabjit Singh Sandhu

Solution :

The correct answer is **option 3** i.e. **Sanjeev Kumar**.

- **Sanjeev Kumar** was appointed as the chairman and managing director of Telecommunications Consultants India Limited on January 2021.
- TCIL was set up in 1978 to provide Indian telecom expertise in all fields to developing countries around the world.

Question 40 :

_____ is created by the collision of convergent plate boundaries.

Difficulty : Moderate

Average Time : 44 Seconds

Options :

1. Mid-ocean ridge



Land erosion

3. Oceanic trench

4. Mountain building

Solution :

The correct answer is **option 4** i.e. **Mountain building**.

- **Mountain building** results from a variety of geological processes. The largest mountain ranges form over millions of years as tectonic plates collide, or as one tectonic plate over-rides another plate.
- The longest mountain ranges on land result from the collision of continents, for instance, the Himalayas due to the ramming of the Indian subcontinent into Asia.

Question 41 :

Which of the following is a water-soluble vitamin?

Difficulty : Moderate

Average Time : 48 Seconds

Options :

1. Vitamin A
2. Vitamin C
3. Vitamin K
4. Vitamin D

Solution :

The correct answer is **option 2** i.e. **Vitamin C**.

- **Vitamin C** is a water-soluble vitamin. It is one of the body's main antioxidants and is required for collagen synthesis.
- Vitamin C comes in two forms. The most common of which is known as ascorbic acid. Vitamin C supports many essential body functions including collagen formation, antioxidant defenses, immune function, etc.

Question 42 :

Tapovan Vishnugad Hydroelectric Project is located in:

Difficulty : Moderate

Average Time : 47 Seconds

Options :

1. Uttarakhand
2. Himachal Pradesh



Ladakh

4. Jammu and Kashmir

Solution :

The correct answer is **option 1** i.e. **Uttarakhand**.

- Tapovan Vishnugad Hydro Power Project is a power station situated in Painsi, Uttarakhand.
- The hydroproject is a 520 MW run of river hydroelectric project being constructed on Dhauliganga river in Chamoli district, Uttarakhand, and the plant is expected to generate over 2.5 TWh of electricity annually.

Question 43 :

With which of the following sports is the term 'Chinaman' associated?

Difficulty : Moderate

Average Time : 46 Seconds

Options :

1. Swimming
2. Table tennis
3. Polo
4. Cricket

Solution :

The correct answer is **option 4** i.e. **Cricket**.

- The term 'Chinaman' is related to the sport of **cricket**.
- Chinaman bowling is a left-arm unorthodox spin in which the bowler spins the ball into a right-handed batsman.
- In India, Leg spinner Kuldeep Yadav became the first ever men's Chinaman bowler to represent India.

Question 44 :

When is National Girl Child Day observed annually in India?

Difficulty : Moderate

Average Time : 45 Seconds

Options :

1. 24 January
2. 5 June
3. 12 May



9 September

Solution :

The correct answer is **option 1** i.e. **24 January**.

- The National Girl Child Day is celebrated annually on **January 24**. It was initiated in 2008 by the Ministry of Women and Child Development and the Government of India, to spread awareness about inequities that girls face in Indian society.
- The day is celebrated with organized programs such as awareness campaigns to save the girl child, child sex ratios, and the creation of a healthy and safe environment for girls.

Question 45 :

Who among the following was the first Indian to unfurl the tricolour on foreign land?

Difficulty : Moderate

Average Time : 52 Seconds

Options :

1. Annie Besant
2. Lakshmi Sehgal
3. Begum Hazrat Mahal
4. Bhikaiji Cama

Solution :

The correct answer is **option 4** i.e. **Bhikaiji Cama**.

- **Bhikaji Rustom Cama**, the fiery lady was the first to have unfurled the first version of the Indian National Flag, a tricolour of green, saffron and red stripes at the International Socialist Congress in Stuttgart, Germany in 1907.
- She also called for human rights, equality, and independence from British authority. The flag, which she co-designed with Shyamji Krishna Varma, was eventually used as a model for our current National Flag.

Question 46 :

Who among the following is the author of the book 'Democrats and Dissenters'?

Difficulty : Moderate

Average Time : 53 Seconds

Options :

1. Gurucharan Das
2. Ramchandra Guha



Nalini Singh

4. Arun Shourie

Solution :

The correct answer is **option 2** i.e. **Ramchandra Guha**.

- The book 'Democrats and Dissenters' is a major new collection of essays by **Ramachandra Guha**, published in 2016.
- The book is a work of rigorous scholarship on topics of compelling contemporary interest and covers a wide range of themes, ranging from national projects of India's neighbours to political debates within India itself, from the responsibilities of writers to the complex relationship between democracy and violence.

Question 47 :

Which part of the body is associated with rickets disorder?

Difficulty : Moderate

Average Time : 51 Seconds

Options :

1. Bones
2. Eyes
3. Skin
4. Heart

Solution :

The correct answer is **option 1** i.e. **Bones**.

- Rickets is a skeletal disorder caused due to lack of Vitamin D, calcium, or phosphate. These nutrients are important for the development of strong and healthy bones.
- People with rickets may have weak and soft bones, stunted growth, and in severe cases, skeletal deformities.
- Rickets is most common in children who are between 6 and 36 months old. Children are at the highest risk of rickets because they are still growing.

Question 48 :

Which of the following diseases is caused by a parasite?

Difficulty : Moderate

Average Time : 51 Seconds

Options :

1. Plague



Pneumonia

3. Goitre

4. Malaria

Solution :

The correct answer is **option 4** i.e. **Malaria**.

- **Malaria** is a life-threatening disease that spreads when an infected mosquito bites a person. The mosquito transfers parasites into that person's bloodstream.
- Symptoms of malaria include fever and shaking chills. If it isn't treated well, malaria can cause severe health problems such as seizures, brain damage, trouble breathing, organ failure and death. Malaria is also treatable, if it's caught early.

Question 49 :

'Bolak-aat' is a _____ from the state of Karnataka.

Difficulty : Moderate

Average Time : 49 Seconds

Options :

1. painting form
2. dance form
3. sculpting form
4. music form

Solution :

The correct answer is **option 2** i.e. **dance form**.

- Bolak-aat is a folk dance form of Karnataka.
- The dance form is believed that Lord Vishnu, on his mission to kill the evil spirit 'Bhasmasura' performed 30 different dance forms, and 'Bolkat' is one among them.
- The dancers dresses up in traditional Kodava dress, and dance in front of oil lamp in an open field.

Question 50 :

What is the objective of the 'Doughnut Model' of development?

Difficulty : Moderate

Average Time : 48 Seconds

Options :



1. It envisions total abandonment of technology to live at peace with environment.
2. It envisions the food processing industry as the centre of development.
3. It envisions rapid development at environmental cost, then make up for it later.
4. It envisions a world in which people and planet can thrive in balance.

Solution :

The correct answer is **option 4** i.e. **It envisions a world in which people and the planet can thrive in balance.**

- The **Doughnut Model** is an integrated approach that combines circular economy, and planetary boundaries and also adds the social justice needs to it.
- The name derives from the shape of the diagram i.e a disc with a hole in the middle. The centre hole of the model depicts the proportion of people that lack access to life's essentials while the crust represents the ecological ceilings that life depends on and must not be overshoot.

Question 51 :

India and _____ were declared joint winners of the 2020 Online FIDE Chess Olympiad.

Difficulty : Moderate**Average Time : 70 Seconds****Options :**

1. The US
2. Serbia
3. Russia
4. Estonia

Solution :

The correct answer is **option 3** i.e. **Russia.**

- **India and Russia** were declared joint winners of the 2020 Online FIDE Chess Olympiad after the final was marred by internet disconnection.
- Russia were initially declared winners after two Indian players, Nihal Sarin and Divya Deshmukh, lost out on time in the final after suffering a disconnection with the server.

Question 52 :

Who among the following is credited with postulating three laws of planetary motion?

Difficulty : Moderate**Average Time : 46 Seconds****Options :**



Isaac Newton

2. Johannes Kepler

3. Galileo Galilei

4. Tycho Brahe

Solution :

The correct answer is **option 2** i.e. **Johannes Kepler**.

- **Johannes Kepler** is credited for postulating the three laws of planetary motion. They describe how (1) planets move in elliptical orbits with the Sun as a focus, (2) a planet covers the same area of space in the same amount of time no matter where it is in its orbit, and (3) a planet's orbital period is proportional to the size of its orbit (its semi-major axis).
- Together, these scientific principles help explain the movements of the planets around the sun in our solar system.

Question 53 :

The income of A is 30% less than the income of B and the income B is 137.5% more than that of C. If the income of A is Rs 28500 less than that of B, then the income (in Rs) of C is :

Difficulty : Moderate

Average Time : 64 Seconds

Options :

1. 36000
2. 48000
3. 50000
4. 40000

Solution :

The correct answer is **option 4** i.e. **40000**.

Given :

The income of A is 30% less than the income of B

The Income B is 137.5% more than that of C

The income of A is Rs 28500 less than that of B

Calculations :

Income B is 137.5% more than that of C

$$137.5\% = 11/8$$

Let the income of C be $8x$

The income of B is $19x$

The income of A is 30% less than the income of B

$$70\% \text{ of } 19x = (70/100)19x = 13.3x$$

Difference between the income of A and B

$$19x - 13.3x = 28500$$

$$5.7x = 28500$$

$$x = 5000$$

Income of C = $8x$

$$8 \times (5000) = \text{Rs } 40000$$

Hence, the income of C is Rs 40,000

Question 54 :

In $\triangle ABC$, $A = 90^\circ$, $AD \perp BC$ at D. If $AB = 12\text{cm}$ and $AC = 16\text{cm}$, then what is the length (in cm) of BD ?

Difficulty : Moderate

Average Time : 71 Seconds

Options :

1. 7.8

2. 6.4

3. 7.2

4. 8.4

Solution :

The correct answer is **option 3** i.e. **7.2**

Given :

$A = 90^\circ$ and $AD \perp BC$ at D

$AB = 12\text{cm}$ and $AC = 16\text{cm}$

Concept used :



Pythagoras theorem :

$$(\text{Hypotenuse})^2 = \text{Perpendicular}^2 + \text{base}^2 \quad \text{----- (1)}$$

Similarity of triangles

Calculations :

Using equation (1), we get

$$BC^2 = AB^2 + AC^2$$

$$BC^2 = 144 + 256$$

$$BC = \sqrt{400}$$

$$BC = 20 \text{ cm}$$

Now using the similarity of triangle in ABC and DBA

$$\frac{BC}{AB} = \frac{AB}{BD} = \frac{AC}{AD}$$

$$BC = \frac{AB^2}{BD}$$

$$BD = \frac{(12 \times 12)}{20}$$

$$BD = 144/20$$

$$\mathbf{BD = 7.2 \text{ cm}}$$

Question 55 :

Ratio of the present age of mother to that of the daughter is 7:1. After 5 years the ratio will become 4:1. What is the difference (in years) in their present age ?

Difficulty : Moderate

Average Time : 81 Seconds

Options :

1. 29

2. 30

3. 28

4. 31

Solution :

The correct answer is **option 2** i.e. **30**

**Given :**

Present age ratio of Mother and daughter = 7 : 1

After 5 years the ratio of mother and daughter age = 4 : 1

Calculations :

let the present age of mother and daughter be $7x$ and x

After 5 years the ratio of their ages is 4 : 1

$$(7x + 5)/(x + 5) = 4/1$$

$$7x + 5 = 4x + 20$$

$$3x = 15$$

$$x = 5$$

The difference between the present age of mother and daughter = $7x - x$

$$6x$$

$$6(5)$$

$$30$$

Hence, the difference (in years) in their present age is 30.

Question 56 :

$1 + 2 \tan^2 \theta + 2 \sec^2 \theta$, $0^\circ < \theta < 90^\circ$, is equal to :

Difficulty : Moderate

Average Time : 62 Seconds

Options :

1. $\frac{1 - \cos \theta}{1 + \cos \theta}$

2. $\frac{1 + \cos \theta}{1 - \cos \theta}$

3. $\frac{1 - \sin \theta}{1 + \sin \theta}$

4. $\frac{1 + \sin \theta}{1 - \sin \theta}$

Solution :

The correct answer is **option 4** i.e. $\frac{1 + \sin \theta}{1 - \sin \theta}$

Given :



$$1 + 2 \tan^2 + 2\operatorname{cosec}^2$$

Formula used :

$$\sin^2 + \cos^2 = 1 \quad \text{---- (1)}$$

$$a^2 - b^2 = (a + b)(a - b) \quad \text{---- (2)}$$

Calculations :

$$1 + 2 \tan^2 + 2\operatorname{cosec}^2$$

It can also be written as

$$1 + 2(\sin^2/\cos^2) + 2\sin/\cos^2$$

$$(\cos^2 + \sin^2 + \sin^2 + 2\sin)/(\cos^2)$$

Using equation (1), we get

$$(1 + \sin^2 + 2\sin)/(\cos^2)$$

$$[(1 + \sin)(1 + \sin)]/[(1 - \sin^2)]$$

Using equation(1) and (2), we get

$$[(1 + \sin)(1 + \sin)]/[(1 + \sin)(1 - \sin)]$$

$$(1 + \sin)/(1 - \sin)$$

Question 57 :

Table shows the number of trees planted in 4 cities from 2016 to 2020. Years Chandigarh Ahmadabad Pune Kolkata 2016 1800 2500 1800 2000 2017 2500 2300 1850 1800 2018 2300 2400 1840 1760 2019 2440 1950 1900 1600 2020 2250 2100 2000 1750 From 2016 to 2020, how many more trees were planted in Ahmedabad as compared to trees planted in Pune?

Difficulty : Moderate

Average Time : 99 Seconds

Options :

1. 1860
2. 1850
3. 2000
4. 2340

Solution :

The correct answer is **option 1** i.e. **1860**

Calculations :

Trees planted in ahmedabad from 2016 to 2020

$$2500 + 2300 + 2400 + 1950 + 2100$$

$$11250$$

Trees planted in pune from 2016 to 2020

$$1800 + 1850 + 1840 + 1900 + 2000$$

$$9390$$

Difference between the trees planted in ahmedabad and pune from 2016 to 2020

$$11250 - 9390$$

$$1860$$

Question 58 :

Angle between the internal bisectors of two angles B and C of a $\triangle ABC$ is 132° , then the value of A is :

Difficulty : Moderate

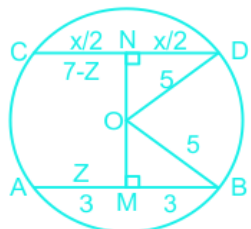
Average Time : 49 Seconds

Options :

1. 62°
2. 72°
3. 84°
4. 48°

Solution :

The correct answer is **option 3** i.e. 84°



Given :

Angle between the internal bisectors of two angles B and C of a $\triangle ABC$ is 132°

Formula used :

Angle between the internal bisector of B and C = $90 + (1/2)A$ ---- (1)

Calculations :

Using equation (1), we get

$$132 = 90 + (1/2)A$$

$$42 = (1/2)A$$

$$84 = A$$

Question 59 :

Study the following tables and answer the question: Number of students enrolled for Vocational Courses (CV) in five institutes -A,B,C,D & E. Year Year/ institutes 2013 2014 2015 2016 2017 2018 A 120 135 130 135 128 140 B 125 132 138 132 135 142 C 125 120 125 138 140 135 D 100 125 122 140 128 138 E 105 110 115 147 130 145 The ratio of the total number of student enrolled for VC in institutes A,C and E in 2016 to the total number of students enrolled in institutes B and D in 2018 , is

Difficulty : Moderate

Average Time : 74 Seconds

Options :

1. 8 : 7
2. 14 : 9
3. 21 : 19
4. 3 : 2

Solution :

The correct answer is **option 4** i.e. **3 : 2**

Calculations :

Total number of student enrolled for VC in institutes A,C and E in 2016

$$135 + 138 + 147$$

$$420$$

Total number of students enrolled in institutes B and D in 2018

142 + 138

280

According to the question,

Ratio between the students enrolled in A,C and E in 2016 to B and D in 2018

420 : 280

3 : 2

Question 60 :

A train runs first 75 km at a certain uniform speed and next 90 km at an average speed of 10 km/h more than the normal speed. If it takes 3 hour to complete the journey, then how much time will the train takes to cover 300 km with normal speed ?

Difficulty : Moderate

Average Time : 59 Seconds

Options :

1. 5 hours 15 minutes
2. 5 hours 25 minutes
3. 5 hours
4. 6 hours

Solution :

The correct answer is **option 4** i.e. **6 hours**

Given :

A train runs first 75 km at a certain uniform speed

Next 90 km at an average speed of 10 km/h more than the normal speed

Total time taken = 3 hours

Formula used :

Speed = Distance/time ----- (1)

Calculations :

Let the speed of train be x

Speed of train when it travels 90km



Total time = Time taken to travel 75km + Time taken to travel 90km

$$3 = (75/x) + 90/(x + 10)$$

$$3(x^2 + 10x) = 75x + 750 + 90x$$

$$3x^2 + 30x = 165x + 750$$

$$3x^2 - 135x - 750 = 0$$

$$x^2 - 45x - 250 = 0$$

$$x^2 - 50x + 5x - 250 = 0$$

$$x(x - 50) + 5(x - 50) = 0$$

$$x = 50, -5$$

Speed of the train = $x = 50$ kmph

Time taken to travel 300km

Using equation (1)

$$300/50$$

6 hours

Hence, Time taken to travel 300km with normal speed is 6 hours.

Question 61 :

$x + y + z = 2$ and $xy + yz + zx = -11$, then the value of $x^2 + y^2 + z^2 - 3xyz$ is :

Difficulty : Moderate

Average Time : 88 Seconds

Options :

1. 78

2. 71

3. 74

4. 69

Solution :

The correct answer is **option 3** i.e. 74

Given :



$$x + y + z = 2 \text{ and } xy + yz + zx = -11$$

Formula used :

$$x^2 + y^2 + z^2 - 3xyz = (x + y + z)[(x + y + z)^2 - 3(xy + yz + zx)] \quad \text{---- (1)}$$

Calculations :

Using equation (1), we get

$$2[(2)^2 - 3(-11)]$$

$$2 [4 - (-33)]$$

$$2(4 + 33)$$

$$2 (37)$$

$$74$$

Question 62 :

The selling price of an articles for Rs 10000 after giving three discounts, 20%, 10%, and k% is Rs6120. What will be selling price (in Rs) of the same articles if a discount of (k + 20)% is allowed?

Difficulty : Moderate

Average Time : 58 Seconds

Options :

1. 8500

2. 6800

3. 6500

4. 8000

Solution :

The correct answer is **option 3** i.e. **6500**

Given :

Marked price (MP) = Rs 10,000

Selling price = Rs 6120

Three discounts = 20%, 10% and k%

Formula used :



Selling price = (MP) \times [(100 - D%)/100] ---- (1)

Calculations :

Using equation (1), we get selling price after 1st and 2nd discount

Selling price after 1st discount = 10000(80/100)

8000

Selling price after 2nd discount = 8000(90/100)

7200

Final discount = 7200 - 6120

(1080/7200) \times 100

k% = 15

If the article is sold after giving (20 + k)% discount i.e (35%)

Using equation (1), we get

10000 (65/100)

Rs 6500

Question 63 :

Table shows income (in Rs) received by 4 employees of a company during the month of December 2020 and all their income source. Source Amit Suresh Nitin Varun Salary 35000 38500 29000 42000 Arrears 6000 6300 5000 7500 Bonus 1000 1100 1000 1240 Overtime 1800 1950 1400 1500 By what percent are the Arrears of Amit and Suresh taken together is less than the Arrears of Nitin and Varun taken together?

Difficulty : Moderate

Average Time : 72 Seconds

Options :

1. 1.4

2. 1.2

3. 1.5

4. 1.6

Solution :

The correct answer is **option 4** i.e. **1.6**

**Calculations :**

Arrears of Amit and Suresh taken together = 6000 + 6300

12300

Arrears of Nitin and Varun taken together = 5000 + 7500

12500

Difference between the arrears of (amit + suresh) and (nitin and varun)

12500 - 12300

200

Now according to the question

Percent = (difference/arrears of nitin and varun) × 100

(200/12500) × 100

8/5

1.6%

Question 64 :

If $a^3 + b^3 = 405$ and $a + b = 9$, then the value of ab is

Difficulty : Moderate

Average Time : 51 Seconds

Options :

1. 10

2. 15

3. 8

4. 12

Solution :

The correct answer is **option 4** i.e. **12**

Given :

$a^3 + b^3 = 405$ and $a + b = 9$

Formula used :



$$(a + b)^3 = a^3 + b^3 + 3ab(a + b) \quad \text{---- (1)}$$

Calculations :

Using equation (1), we get

$$(9)^3 = 405 + 3ab(9)$$

$$729 = 405 + 27ab$$

$$324 = 27ab$$

$$ab = 12$$

Question 65 :

Study the following tables and answer the question: Number of students enrolled for Vocational Courses (VC) in five institutes -A,B,C,D & E. Year/institutes 2013 2014 2015 2016 2017 2018 A 120 135 130 135 128 140 B 125 132 138 132 135 142 C 125 120 125 138 140 135 D 100 125 122 140 128 138 E 105 110 115 147 130 145 The total number of students enrolled for VC in institutes C in 2013, 2014 and 2017 is what percent of total percent of the total number of students enrolled in all the five institutes in 2018?

Difficulty : Moderate**Average Time : 64 Seconds****Options :**

1. 62

2. 55

3. 58

4. 53

Solution :

The correct answer is **option 2** i.e. **55**

Calculations :

Total number of students enrolled for VC in institutes C in 2013, 2014 and 2017

$$125 + 120 + 140$$

$$385 \quad \text{---- (1)}$$

Total number of students enrolled in all the five institutes in 2018

$$140 + 142 + 135 + 138 + 145$$



700 ---- (2)

Using equation (1) and (2), we get

Percent of students enrolled = $(385/700) \times 100$

$385/7$

55%

Question 66 :

If $(2x - \frac{3}{x}) = 2$, then what is the value of $(16x^4 + \frac{81}{x^4})$?

Difficulty : Moderate

Average Time : 51 Seconds

Options :

1. 328
2. 180
3. 184
4. 220

Solution :

The correct answer is **option 3** i.e. **184**

Given :

$$(2x - \frac{3}{x}) = 2$$

Formula used :

$$(a + b)^2 = a^2 + b^2 + 2ab \quad \text{---- (1)}$$

Calculations :

Using equation (1)

$$(2x - \frac{3}{x})^2 = 4x^2 + \frac{9}{x^2} - 2(2x)(\frac{3}{x})$$

$$4 = 4x^2 + \frac{9}{x^2} - 12$$

$$16 = 4x^2 + \frac{9}{x^2} \quad \text{----- (2)}$$

Using equation (1) in equation (2)

$$(4x^2 + \frac{9}{x^2})^2 = 16x^2 + \frac{81}{x^4} + 2(4x^2)(\frac{9}{x^2})$$



$$256 = 16x^2 + 81/x^4 + 72$$

$$16x^2 + 81/x^4 = 256 - 72$$

184

Question 67 :

Difficulty : Moderate

Average Time : 70 Seconds

Options :

1. $-\frac{1}{9}$
2. $\frac{1}{3}$
3. $-\frac{1}{3}$
4. $\frac{1}{9}$

Solution :

The correct answer is **option 4** i.e. $\frac{1}{9}$

Given :

$$\frac{\operatorname{cosec} \theta + \cot \theta}{\operatorname{cosec} \theta - \cot \theta} = 7$$

Calculations :

$$\operatorname{cosec} \theta + \cot \theta = 7(\operatorname{cosec} \theta - \cot \theta)$$

$$8 \cot \theta = 6 \operatorname{cosec} \theta$$

$$8 \left(\frac{\cos \theta}{\sin \theta} \right) = 6 \left(\frac{1}{\sin \theta} \right)$$

$$\cos \theta = \frac{3}{4}$$

Using trigonometric ratios, we get

$$\sin \theta = \frac{\sqrt{7}}{4}$$

Now we have, $\frac{4 \sin^2 \theta - 1}{4 \sin^2 \theta + 5}$

Putting the value of $\sin \theta$, we get

$$\frac{4(7/16) - 1}{4(7/16) + 5}$$

$$\frac{3/4}{27/4}$$

1/9

**Question 68 :**

The average of 22 numbers is 37.5. The average of first 12 number is 40.6 and that of the last 12 number is 35.4. If 11th and 12th number are excluded, then what is the average of remaining number?

Difficulty : Moderate**Average Time : 74 Seconds****Options :**

1. 37.8
2. 36.9
3. 37.4
4. 36.4

Solution :

The correct answer is **option 2** i.e. **36.9**

Given :

The average of 22 numbers is 37.5.

The average of first 12 number is 40.6

Average of the last 12 number is 35.4.

Formula used :

Average = Sum of observation/number of observations ---- (1)

Calculations :

Using equation (1), we get

Sum of 22 numbers = 37.5×22

825

Sum of first 12 numbers = 12×40.6

487.2

Sum of last 12 numbers = 12×35.4

424.8

Sum of first and last 12 numbers = 912

Sum of 11th and 12th number = 912 - 825

87

If 11th and 12th are excluded, the average of the remaining 20 numbers

$(825 - 87)/20$

$738/20$

36.9

Question 69 :

If the 6-digit number $5x423y$ is divisible by 88, then what is the value of $(5x - 8y)$?

Difficulty : Moderate

Average Time : 68 Seconds

Options :

1. 16
2. 28
3. 24
4. 14

Solution :

The correct answer is **option 3** i.e. **24**

Given :

6-digit number $5x423y$ is divisible by 88

Concept used :

Divisibility factors of 8 and 11

Calculations :

If $5x423y$ is divisible by 11, difference of the alternative number should be 0 or factor of 11

$$(5 + 4 + 3) - (x + 2 + y) = 0$$

$$(12) - (x + y + 2) = 0$$

$$x + y = 10 \quad \text{----- (1)}$$

If $5x423y$ is divisible by 8, last three digits should be divisible by 8



23y is divisible by 8

The least value of y is 2

232 is divisible by 2

Put the value of x in equation (1)

$$x + y = 10$$

$$x + 2 = 10$$

$$x = 8$$

The value of $(5x - 8y)$

$$5(8) - 8(2)$$

$$40 - 16$$

$$24$$

Question 70 :

If $3\cos^2 - 4\sin + 1 = 0$, $0^\circ < 90^\circ$, then $\tan + \sec = ?$

Difficulty : Moderate

Average Time : 72 Seconds

Options :

1. 2 5

2. 2 3

3. 3 3

4. 5

Solution :

The correct answer is **option 4** i.e. **5**

Given :

$$3\cos^2 - 4\sin + 1 = 0$$

Formula used :

$$\sin^2 + \cos^2 = 1 \quad \text{---- (1)}$$

Calculations :

$$3\cos^2 - 4\sin + 1 = 0$$

Using equation (1)

$$3(1 - \sin^2) - 4\sin + 1 = 0$$

Put $\sin = x$

$$3 - 3x^2 - 4x + 1 = 0$$

$$3x^2 + 4x - 4 = 0$$

$$3x^2 + 6x - 2x - 4 = 0$$

$$3x(x + 2) - 2(x + 2) = 0$$

$$(3x - 2)(x + 2) = 0$$

$$x = 2/3 \text{ and } -2$$

$$\sin = 2/3 \text{ and } -2$$

We know that \sin lies in between -1 and 1 , so

$$\sin = 2/3$$

Using trigonometric ratios, we get

$$\tan = 2/\sqrt{5}$$

$$\sec = 3/\sqrt{5}$$

Now, we have $\tan + \sec$

Putting the values we get

$$2/\sqrt{5} + 3/\sqrt{5}$$

$$5/\sqrt{5}$$

$$\sqrt{5}$$

Question 71 :

In a circle with center O, AB is a diameter and CD is a chord such that $\angle ABC = 34^\circ$ and $CD = BD$. What is the measure of $\angle DBC$?

Difficulty : Moderate

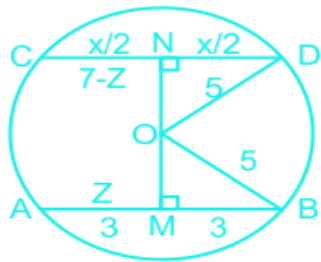
Average Time : 97 Seconds

Options :

- 24°
- 2. 28°
- 3. 32°
- 4. 30°

Solution :

The correct answer is **option 2** i.e. **28°**



Given :

$\angle ABC = 34^\circ$ and $CD = BD$

Calculations :

$\angle ACB = 90^\circ$

In ΔACB

$$\angle ABC + \angle ACB + \angle BAC = 180$$

$$34 + 90 + \angle BAC = 180$$

$$\angle BAC = 180 - 124$$

$$\angle BAC = 56$$

We know ABDC is a cyclic quadrilateral

The sum of opposite angle is 180

$$\angle A + \angle D = 180$$

$$56 + \angle D = 180$$

$$\angle D = 124$$

CD and BD are equals such that angles opposite to these sides are also equal



In ΔBDC , we know

$$CD = BD \text{ and } \angle DBC = \angle BCD$$

$$\angle DBC + \angle BCD + \angle BDC = 180$$

$$2 \angle DBC = 180 - 124$$

$$2 \angle DBC = 56$$

$$\angle DBC = 28$$

Question 72 :

In a circle with center O and radius 5 cm. AB and CD are two parallel chords of lengths 6 cm and x cm, respectively and the chords are on the opposite side of center of the center O. The distance between the chords is 7 cm. What is the value of x?

Difficulty : Moderate

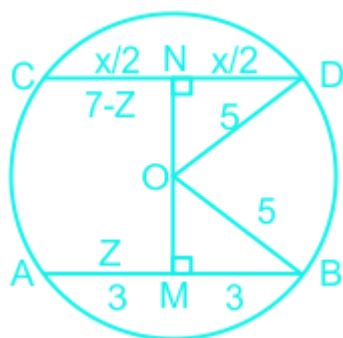
Average Time : 93 Seconds

Options :

1. 9
2. 12
3. 8
4. 10

Solution :

The correct answer is **option 3** i.e. **8**



Given :

Radius = 5 cm

AB and CD are two parallel chords



Distance between the chords is 7 cm

AB = 6 cm

CD = x cm

Formula used :

$$\text{Radius}^2 = (\text{chord}/2)^2 + (\text{Length between the chord and centre})^2 \quad \text{---- (1)}$$

Calculations :

Let OM = z

ON = 7 - z

Using equation (1) in ΔOMB

$$25 = 9 + z^2$$

$$16 = z^2$$

$$z = 4 \text{ cm}$$

ON = 7 - z

ON = 3 cm

Using equation (1) in ΔOND

$$25 = 9 + (x/2)^2$$

$$16 = x^2/4$$

$$64 = x^2$$

$$\mathbf{x = 8 \text{ cm}}$$

Question 73 :

A sum of Rs.7500 amounts to Rs.9075 at 10%p.a; interest being compounded yearly at a certain time. The simple interest (in Rs) on the same sum for the same time and the same rate is :

Difficulty : Moderate

Average Time : 83 Seconds

Options :

1. 1500

2. 1520



1480

4. 1530

Solution :The correct answer is **option 1** i.e. **1500**.**Given :**

Amount (A) = Rs 9075

Principal (P) = Rs 7500

Rate (R) = 10%

Formula used :

$$A = P (1 + R/100)^t \quad \text{----- (1)}$$

$$\text{Simple interest} = (PRt)/100 \quad \text{---- (2)}$$

Calculations :

Using equation (1)

$$9075 = 7500(1 + 10/100)^t$$

$$9075/7500 = (11/10)^t$$

$$121/100 = (11/10)^t$$

$$(11/10)^2 = (11/10)^t$$

$$t = 2 \text{ years}$$

Now, using equation (2), we get

$$\text{Simple interest} = (7500 \times 2 \times 10)/100 = 1500$$

Question 74 :The value of $(52 - 1170 \div 26 + 13 \times 2) \text{ over } 2 + 1\frac{1}{8} \text{ of } 2 - 1\frac{1}{4}$ is:**Difficulty : Moderate****Average Time : 57 Seconds****Options :**

1. 12

2. 41



27

4. 11

Solution :

The correct answer is **option 4** i.e. **11**.

Concept used :

BODMAS rule

Calculations :

$$\left(\frac{52 - (1170/26) + 13 \times 2}{2 + (9/8) \times 2 - 5/4}\right)$$

$$\left(\frac{52 - 45 + 26}{2 + (9/4) - (5/4)}\right)$$

$$33/3 = 11$$

Question 75 :

A can do a certain work in 15 days. B is 25% more efficient than A. Both worked together for 4 days. C alone completed the remaining work in 8 days. A, B, and C together will complete the same work in?

Difficulty : Moderate**Average Time : 49 Seconds****Options :**

1. $4\left(\frac{1}{2}\right)$ days
2. 5 days
3. $6\left(\frac{1}{2}\right)$ days
4. 4 days

Solution :

The correct answer is **option 2** i.e. **5 days**.

Given :

A can do a certain work in 15 days

B is 25% more efficient than A

A and B do the work for 4 days remaining work is completed by C

Calculations :



B is 25% more efficient than A

$$(100/125) \times 15$$

12 days

Now, the LCM of 15 and 12 is 60

$$\text{Efficiency of A} = 60/15 = 4 \text{ units}$$

$$\text{Efficiency of B} = 60/12 = 5 \text{ units}$$

$$\text{A and B work for 4 days} = (4 + 5) \times 4$$

$$9 \times 4 = 36 \text{ units}$$

$$\text{Remaining work} = (60 - 36) = 24 \text{ units}$$

The remaining work is completed by C in 8 days

$$24/8 = 3 \text{ units per day}$$

A, B, and C can complete the whole work

$$(60/(5 + 4 + 3))$$

$$60/12 = 5 \text{ days}$$

Question 76 :

What is the area (in cm²) of circle inscribed in square of area 784cm²? (Take $\sqrt{22}$)

Difficulty : Moderate

Average Time : 72 Seconds

Options :

1. 660
2. 616
3. 924
4. 462

Solution :

The correct answer is **option 2** i.e. **616**

Given :

Circle is inscribed in a square



Area of square = 784 cm^2

Formula used :

Area of square = $(\text{side})^2$ ----- (1)

Area of circle = r^2 ----- (2)

Calculations :

Using equation (1)

Area of square = 784

$(\text{Side})^2 = 784$

Side = $\sqrt{784} = 28 \text{ cm}$

The side of the square is the diameter of the circle

Diameter = 28 cm

Radius = $28/2 = 14 \text{ cm}$

Using equation (2)

Area of circle = $(22/7) \times 14 \times 14$

44×14

616 cm^2

Question 77 :

Select the most appropriate option to substitute the underlined segment in the given sentence. If no substitution is required, select 'No substitution'. The place is too much noisy.

Difficulty : Moderate

Average Time : 73 Seconds

Options :

1. too noisy
2. much too much noisy
3. No substitution
4. much noisy

Solution :

The correct answer is **option 1** i.e. **too noisy**

- **Much** is only used when we are speaking about a **singular noun**.
- "**Too much**" refers to the excess of something.
- **Too** is used to describe an **extreme state of an adjective or adverb**.
- **Much** is used for describing the **quantity** of something.

Hence, **too noisy** will be the best replacement for the erroneous part of the sentence.

Question 78 :

Select the option that can be used as a one-word substitute for the given group of words. A person who listens to someone's private conversation without them knowing

Difficulty : Moderate

Average Time : 63 Seconds

Options :

1. **Spy**
2. **Eavesdropper**
3. **Secret agent**
4. **Infiltrator**

Solution :

The correct answer is **option 2** i.e. **Eavesdropper**

- **Eavesdropper** is a secret listener to private conversations.
- **Spy** is a person who secretly collects & reports information on activities, movements & plans of an enemy.
- **Secret agent** is a government employee whose job involves getting secret information about the government's unfriendly foreign countries.
- **Infiltrator** is someone who gains access to an organization in order to acquire secret information to cause damage.

Clearly, one word substitution for the given sentence is **eavesdropper**.

Question 79 :

Select the most appropriate option to fill in the blank. A _____ souvenir will be released on the occasion of the World Meet

Difficulty : Moderate

Average Time : 61 Seconds

Options :

1. **generous**



bountiful

3. considerable

4. voluminous

Solution :

The correct answer is **option 4** i.e. **voluminous**

- **Souvenir** is a thing that is kept as a reminder of a person, place, or event

The meaning of the options are:

1. **Generous:** showing a readiness to give more of something, especially money, than is strictly necessary or expected.
2. **Bountiful:** large in quantity; abundant.
3. **Considerable:** notably large in size, amount, or extent.
4. **Voluminous:** Having or marked by a great volume or bulk; large.

In the above-given sentence, it is clearly mentioned that a large souvenir will be released on the occasion of the World Meet.

The correct sentence will be:

A voluminous souvenir will be released on the occasion of the World Meet

Question 80 :

Select the most appropriate option to fill in the blank. You need not _____ so much fuss about wearing a mask when you go out.

Difficulty : Moderate

Average Time : 72 Seconds

Options :

1. generate
2. do
3. cause
4. make

Solution :

The correct answer is **option 4** i.e. **make**

- There is an idiomatic phrase i.e., '**Make a fuss**' which means to cause disturbance by complaining, arguing, etc.

The sentence has an **ordering tone**. One person is instructing the other person not to complain and argue about wearing a mask.

The correct sentence is:

You need not make so much fuss about wearing a mask when you go out.

Question 81 :

Select the option that expresses the given sentence in reported speech. "Whom did you see at the shopping mall today?" I asked my daughter.

Difficulty : Moderate

Average Time : 56 Seconds

Options :

1. I asked my daughter whom she had seen at the shopping mall that day.
2. I asked my daughter who she has seen at the shopping mall today.
3. I asked my daughter that whom she saw at the shopping mall on that day.
4. I asked my daughter that whom did she saw at the shopping mall that day.

Solution :

The correct answer is **option 1** i.e. **I asked my daughter whom she had seen at the shopping mall that day.**

- The given sentence is in an interrogative form.
- While converting, the interrogative sentence is changed into its assertive form, hence removing the question tag.
- Since the given sentence is in the simple past tense, it will be changed into past perfect tense changing did see into had seen.
- The second person you will be changed to third person 'she'.
- No conjunction will be used because the question belongs to WH-family.
- **Today** will be changed to **that day**.

Hence the required direct speech is-

I asked my daughter whom she had seen at the shopping mall that day

Question 82 :

Select the INCORRECTLY spelt word.

Difficulty : Moderate

Average Time : 79 Seconds

Options :



Vishious

2. Moisture
3. Anxious
4. Mimic

Solution :

The correct answer is **option 1** i.e. **Vishious**

The correct spelling is **vicious**.

The meaning of the given options are:

1. **Vicious:** deliberately cruel or violent.
2. **Moisture:** water or other liquid diffused in a small quantity as vapor, within a solid, or condensed on a surface.
3. **Anxious:** feeling or showing worry, nervousness, or unease about something with an uncertain outcome.
4. **Mimic:** imitate someone or their actions or words.

Question 83 :

Sentences of a paragraph are given below in jumbled order. Arrange the sentences in the right order to form a meaningful and coherent paragraph. A. This invention has helped us to heal wounds caused by bacteria. B. Penicillin is one of the most useful drugs man has invented. C. In the beginning however, very few people knew of this discovery and its use. D. Its use has saved the lives of hundreds of thousands of soldiers.

Difficulty : Moderate

Average Time : 72 Seconds

Options :

1. DCBA
2. ABCD
3. BADC
4. CABD

Solution :

The correct answer is **option 3** i.e. **BADC**

- **Sentence B** clearly is the introductory sentence of the given paragraph as it introduces the topic of '**penicillin**'.
- Followed by Sentence A which talks about how the invention of penicillin has helped us.
- Further followed by Sentence D which tells us how penicillin has saved the lives of hundreds & thousands of



soldiers.

- Lastly, Sentence D will come telling how its discovery & use were known to very few people in the beginning.

Hence, the correct sequence is **BADC**.

Question 84 :

Sentences of a paragraph are given below in jumbled order. Arrange the sentences in the right order to form a meaningful and coherent paragraph. A. Then I took him by the hand and led him across the street. B. I was going to the market when I saw a blind man trying to cross the street. C. He expressed his gratitude with folded hands. D. I walked across to the blind man.

Difficulty : Moderate

Average Time : 75 Seconds

Options :

1. DABC
2. BDAC
3. ABCD
4. CBDA

Solution :

The correct answer is **option 2** i.e. **BDAC**

- The best way of solving these questions is by finding an introductory sentence or pair of sentences.
- Sentence B introduces us to the fact that **people saw a blind man crossing the street**.
- **Sentence B** pairs well with **sentence D**, telling that on seeing a blind man crossing the road, **he walked to that blind man**.
- **Sentences D and A** further make a pair as it tells us that he reached the blind man, **he took him by the hand and led him across the street**.
- Lastly, **sentence C** will follow **sentence A** telling that the blind man expressed his **gratitude with folded hands**.

Hence, the most appropriate sequence is '**BDAC**'.

Question 85 :

Select the option that can be used as a one-word substitute for the given group of words. A large building with an

extensive floor area, typically for housing aircraft

Difficulty : Moderate

Average Time : 74 Seconds

Options :

1. Airport
2. Shed
3. Hangar
4. Barn

Solution :

The correct answer is **option 3** i.e. **Hangar**

- **Airport:** Place where one goes to catch flights.
- **Shed:** a simple roofed structure used for garden storage, to shelter animals, or as a workshop.
- **Hangar:** a large building with an extensive floor area, typically for housing aircraft.
- **Barn:** a large farm building used for storing grain, hay, or straw or for housing livestock.

Clearly, the one-word substitution for the given statement is **Hangar**.

Question 86 :

Select the most appropriate synonym of the given word. Transmit

Difficulty : Moderate

Average Time : 54 Seconds

Options :

1. Catch
2. Convey
3. Receive
4. Accept

Solution :

The correct answer is **option 2** i.e. **Convey**

The meaning of the given options is:

1. **Transmit:** to send or convey from one person or place to another
2. **Catch:** intercept something which has been thrown
3. **Convey:** transmit or carry to a place.



Receive: to accept

5. **Accept:** consent to receive or undertake (something offered).

Clearly, out of the given options **convey** is the most appropriate synonym to **transmit**.

Question 87 :

Select the option that will improve the underlined part of the sentence. In case no improvement is needed, select 'No improvement required'. I wish I have come an hour sooner.

Difficulty : Moderate

Average Time : 61 Seconds

Options :

1. has
2. had
3. will
4. No improvement required

Solution :

The correct answer is **option 2** i.e. **had**

- **Firstly, the sentence is in past perfect tense.**
- To make a sentence in past perfect tense, we use **had** and the **past participle of the verb** in one part of the sentence.
- We use **wish + past form of verb** when we want something to be different from now and the future,
- We use **wish+ past perfect verb** to show regret regarding something.
- Therefore, in the given sentence **have** will be replaced with **had**.

CORRECT SENTENCE:

I wish I had come an hour sooner.

Question 88 :

Select the option that expresses the given sentence in passive voice. Someone stole his traveller's cheques when he was travelling in Europe.

Difficulty : Moderate

Average Time : 67 Seconds

Options :

1. His traveller's cheques are stole when he was travelling in Europe.
2. Someone had been stole his traveller's cheques when he was travelling in Europe.

His traveller's cheques was stole when he was travelling in Europe.

4. His traveller's cheques were stolen when he was travelling in Europe.

Solution :

The correct answer is **option 4** i.e. **His traveller's cheques were stolen when he was travelling in Europe.**

Following rules should be kept in mind while converting active into passive voice:

- The subject in the active voice becomes the object in the passive voice and the object in the active voice becomes the subject in the passive voice.
- Put '**by**' in front of the **subject** in the **passive voice**.
- Use **3rd form of verb + is/am/are/was/were/been/being** according to the **tense** in **passive voice**.

Hence, as per the above mentioned rules the correct answer is option

Question 89 :

The following sentence has been divided into parts. One of them contains an error. Select the part that contains the error from the given options. The Principal requested / the teacher's / to monitor / and take care of the small children.

Difficulty : Moderate

Average Time : 99 Seconds

Options :

1. the teacher's
2. to monitor
3. The Principal requested
4. and take care of the small children

Solution :

The correct answer is **option 1** i.e. **the teacher's**

- In the given sentence the **error** lies in **part 2**
- We use an **apostrophe + "s"** to show that **one person/thing or is a member of something**.
- We use an apostrophe after the "s" ('s) at the end of a **plural noun to show possession**.
- If a plural noun doesn't end in "s", add an apostrophe + "s" to create the possessive form.
- We use '**s**' to **pluralize the regular nouns**.
- In the given sentence there are many teachers who have to take care of the children.
- Therefore, "**the teacher's**" should be replaced with "**the teachers**".



Hence, **option 1** is the correct answer.

Question 90 :

Select the most appropriate meaning of the given idiom. Full of beans

Difficulty : Moderate

Average Time : 104 Seconds

Options :

1. A storeroom full of vegetables
2. A dish made of French beans
3. Full of energy
4. Full of cowardice

Solution :

The correct answer is **option 3** i.e. **Full of energy**

The meaning of the given idiom **Full of beans** is **Full of energy**.

Question 91 :

Select the most appropriate ANTONYM of the given word. Invade

Difficulty : Moderate

Average Time : 40 Seconds

Options :

1. Seize
2. Assault
3. Attack
4. Surrender

Solution :

The correct answer is **option 4** i.e. **Surrender**

The meaning of the given options are-

1. **Invade:** forcefully subjugating something.
2. **Seize:** take hold of suddenly and forcibly.
3. **Assault:** make a physical attack on someone.
4. **Attack:** aggressive military action against
5. **Surrender:** stop resisting an enemy or opponent and submit to their authority.



The most appropriate antonym for **invade** from the given options is **Surrender**.

Question 92 :

Select the most appropriate ANTONYM of the given word. Toxic

Difficulty : Moderate

Average Time : 54 Seconds

Options :

1. Healthy
2. Flourish
3. Lethal
4. Harmful

Solution :

The correct answer is **option 1** i.e. **Healthy**

The meaning of the given options is:

1. **Toxic:** poisonous
2. **Healthy:** in good health.
3. **Flourish:** grow or develop in a healthy way
4. **Lethal:** very harmful or destructive.
5. **Harmful:** causing or likely to cause harm.

Clearly, from the above-given options, **toxic** has the exact opposite meaning to that of **healthy**.

Question 93 :

Select the most appropriate synonym of the given word. Numerous

Difficulty : Moderate

Average Time : 53 Seconds

Options :

1. Few
2. Several
3. Numbered
4. Totalled

Solution :

The correct answer is **option 2** i.e. **Several**



The meaning of the options are:

1. **Numerous:** great in number
2. **Few:** less in number
3. **Severel:** more than two
4. **Numbered:** amount to; comprise
5. **Totalled:** amount in number to

Out of the given options, clearly the most accurate synonym for **Numerous** is **Severel**.

Question 94 :

The following sentence has been divided into parts. One of them contains an error. Select the part that contains the error from the given options. It have been only(1) / through writing(2) / that men have been able(3) / to spread their ideas to mankind(4)/no error

Difficulty : Moderate

Average Time : 59 Seconds

Options :

1. to spread their ideas to mankind
2. It have been only
3. that men have been able
4. through writing

Solution :

The correct answer is **option 2** i.e. **It have been only**

- In the given sentence, the use of '**have been**' is **incorrect**.
- **Have** is used with the pronouns **I, you, we, and they**.
- **Has** is used with **he, she, and it**.
- Therefore, in the sentence '**has**' will be used in place of '**have**'.

Hence, **option 2** is the **correct answer**.

Question 95 :

Select the **INCORRECTLY** spelt word.



Difficulty : Moderate

Average Time : 71 Seconds

Options :

1. Scrutinize
2. Cerebral
3. Withdrawl
4. Arbitrary

Solution :

The correct answer is **option 3** i.e. **Withdrawl**

The meaning of the given options are:

1. **Scrutinize**: examine or inspect closely and thoroughly.
2. **Cerebral**: of the cerebrum of the brain.
3. **Withdrawal**: the action of withdrawing something.
4. **Arbitrary**: based on random choice or personal whim, rather than any reason or system.

Withdrawl is spelled as **withdrawal**.

Comprehension :

In the following passage, some words have been deleted. Fill in the blanks with the help of the alternatives given. Select the most appropriate option for each blank. It is true that the more you study, the more you (1)_____ your horizon and hence your point of view undergoes a (2)_____. A person with higher education certainly has a better (3)_____ and ideas to help in the community and societal (4)_____. Ideas that are gathered from such people provide a global (5)_____ for the nation as a whole.

Question 96 :

Select the most appropriate option to fill in blank number 1.

Difficulty : Moderate

Average Time : 75 Seconds

Options :

1. expand
2. convert
3. exchange
4. narrow

Solution :

Page No: 76

Follow us on



Address : 1997, Mukherjee Nagar, 110009

Email : online@kdcampus.org

Call : +91 95551 08888

Download the App



The correct answer is **option 1** i.e. **expand**

The meaning of the given options is as follows:

1. **expand:** become or make larger or more extensive.
2. **convert:** change.
3. **exchange:** An act of giving one thing and receiving another (especially of the same kind) in return.
4. **narrow:** of small width in relation to length.

Clearly, the tone of the passage is positive. This particular sentence talks about how positively more education impacts your horizon of thinking.

Therefore, the most suited option for the blank will be **expand**.

Comprehension :

In the following passage, some words have been deleted. Fill in the blanks with the help of the alternatives given. Select the most appropriate option for each blank. It is true that the more you study, the more you (1)_____ your horizon and hence your point of view undergoes a (2)_____. A person with higher education certainly has a better (3)_____ and ideas to help in community and societal (4)_____. Ideas that are gathered from such people provide a global (5)_____ for the nation as a whole.

Question 97 :

Select the most appropriate option to fill in blank number 2.

Difficulty : Moderate

Average Time : 82 Seconds

Options :

1. **succession**
2. **backwardness**
3. **enlargement**
4. **transformation**

Solution :

The correct answer is **option 4** i.e. **transformation**

The meaning of the given options is as follows:

1. **succession:** a number of people or things of a similar kind following one after the other.
2. **backward:** (of a movement) in the direction of one's back.
3. **enlargement:** expansion of something.

transformation: a marked change in form, nature, or appearance.

Clearly, the tone of the passage is positive. This particular sentence talks about what impact will education have on a person's perspective.

Therefore, the most suited option for the blank will be **transformation**.

Comprehension :

In the following passage, some words have been deleted. Fill in the blanks with the help of the alternatives given. Select the most appropriate option for each blank. It is true that the more you study, the more you (1)_____ your horizon and hence your point of view undergoes a (2)_____. A person with higher education certainly has a better (3)_____ and ideas to help in community and societal (4)_____. Ideas that are gathered from such people provide a global (5)_____ for the nation as a whole.

Question 98 :

Select the most appropriate option to fill in blank number 3.

Difficulty : Moderate

Average Time : 85 Seconds

Options :

1. routine
2. outlook
3. scope
4. luck

Solution :

The correct answer is **option 2** i.e. **outlook**

The meaning of the given options is as follows:

1. **routine:** a sequence of actions regularly followed.
2. **outlook:** point of view
3. **scope:** the extent of the subject matter that something deals with or to which it is relevant
4. **luck:** success or failure apparently brought by chance rather than through one's own actions.

Clearly, the tone of the passage is positive. This particular sentence talks about what an educated person can bring in for the development of the community along with better ideas.

Therefore, the most suited option for the blank will be **outlook**.

Comprehension :

In the following passage, some words have been deleted. Fill in the blanks with the help of the alternatives given. Select

the most appropriate option for each blank. It is true that the more you study, the more you (1)_____ your horizon and hence your point of view undergoes a (2)_____. A person with higher education certainly has a better (3)_____ and ideas to help in community and societal (4)_____. Ideas that are gathered from such people provide a global (5)_____ for the nation as a whole.

Question 99 :

Select the most appropriate option to fill in blank number 4.

Difficulty : Moderate

Average Time : 86 Seconds

Options :

1. ripening
2. elaboration
3. development
4. maturity

Solution :

The correct answer is **option 3** i.e. **development**

The meaning of the given options is as follows:

1. **ripening**: become or make ripe.
2. **elaboration**: the process of developing or presenting a theory, policy, or system in further detail.
3. **development**: the process of developing or being developed.
4. **maturity**: the state, fact, or period of being mature.

Clearly, the tone of the sentence is positive. It is talking about ideas that can help in the improvement of a community & society.

Therefore, the most suited option for the blank will be **development**.

Comprehension :

In the following passage, some words have been deleted. Fill in the blanks with the help of the alternatives given. Select the most appropriate option for each blank. It is true that the more you study, the more you (1)_____ your horizon and hence your point of view undergoes a (2)_____. A person with higher education certainly has a better (3)_____ and ideas to help in the community and societal (4)_____. Ideas that are gathered from such people provide a global (5)_____ for the nation as a whole.

Question 100 :



Select the most appropriate option to fill in blank number 5.

Difficulty : Moderate

Average Time : 84 Seconds

Options :

1. proportion
2. posture
3. perspective
4. prejudice

Solution :

The correct answer is **option 3** i.e. **perspective**

The meaning of the given options is as follows:

1. **proportion**: A part or a share.
2. **posture**: The position in which someone holds their body when standing or sitting.
3. **perspective**: Outlook or viewpoint.
4. **prejudice**: Preconceived opinion that is not based on reason or actual experience.

Clearly, the sentence is talking about a gathering of people providing a global viewpoint for a nation as a whole.

Therefore, the most suited option for the blank will be **perspective**.

Ssc Cgl Tier I Previous Year Question Paper Analysis

The analysis of Ssc Cgl Tier I Previous Year Question Paper held on 2021-08-16 in the Morning exam is as follows:

1. 100 questions were moderate.
2. The safe score is 140 marks.
3. 25 questions were asked from English Language, 25 questions were asked from Quantitative Aptitude, 25 questions were asked from Logical Reasoning and 25 questions were asked from General Awareness
4. 31 questions should have been skipped if you were short of time.

Ssc Cgl Tier I Previous Year Question Paper Topic

Wise Weightage

English Language

1. Reading Comprehension - 1
2. Vocab - 3
3. Cloze Test - 5
4. Spotting Error - 2
5. Parajumbles - 2
6. Idioms - 2
7. One Word Substitution - 2
8. Spellings - 2
9. Fillers - 1
10. Voice - 1
11. Sentence Improvement - 1

Quantitative Aptitude

1. Simplification - 1
2. Interest - 1
3. Number System - 22
4. Profit And Loss - 1

Logical Reasoning

1. Coding Decoding - 2
2. Mirror Image - 1
3. Analogy - 5
4. Classification - 2
5. Blood Relations - 1
6. Syllogism - 1
7. Venn Diagrams - 1
8. Dictionary Based - 1
9. Calendar - 1
10. Figure Based - 2
11. Matrix - 1
12. Series - 4
13. Mathematical Reasoning - 1

Cubes And Dice - 1
15. Embedded Figure - 1

General Awareness

1. GK Misc - 25

Ssc Cgl Tier I Previous Year Question Paper Tips and Tricks



1. Try to solve Ssc Cgl Tier I Previous Year Question Paper without taking any help from the solutions.
2. Ssc Cgl Tier I Previous Year Question Paper require proper usage of concept so firstly read the question thoroughly and then use the right concept.
3. In case you're not able to solve the question in less than 30 seconds in the exam then you should skip the question and move to the next question.

Daily Current Affairs



KD Live is providing [Current Affairs](#) on a daily basis for SSC and a [Current Affairs Quiz](#) too for the practice.

KD Live Free Offerings



KD Live is Offering Every Information and Study Material required for the self study. Please click on the following links for accessing those.

- [Study Plan](#)
- [General Science](#)
- [General Awareness](#)
- [General Knowledge](#)
- [Quantitative Aptitude](#)
- [Logical Reasoning](#)

English Language
Today In History
Syllabus
Know Your State
Know Your Country
Know Your City
Know Your Leader
Books And Authors
Daily Vocabulary
Daily Editorial
Latest Notifications
Exam Dates
Admit Card
Exam Results
Exam Cutoff
Exam Eligibility
Exam Pattern
Answer Key
Important Days



Further Guidance on Ssc Cgl Tier I Previous Year Question Paper

For Asking any query on Ssc Cgl Tier I Previous Year Question Paper please mail [Send Email](#) or you can fill the form at [KD Live](#).

About KD Live

KD live has an expertise in providing apt explanations for the Ssc Cgl Tier I Previous Year Question Paper since 2008. More than 10 lakh aspirants have cleared competitive exams under the guidance of Neetu Mam. Study.kdcampus.live is providing free information on various topics and for the Ssc Cgl Exam you can refer the following link [Click Here](#) however if you want to practice more questions then please refer the following link [Click Here](#).

About Neetu Mam

Neetu Mam is primarily passionate for the English language and teaching from the last 20 years however for the Ssc Cgl Tier I Previous Year Question Paper. She has guided her team to provide the best explanation for the question.