

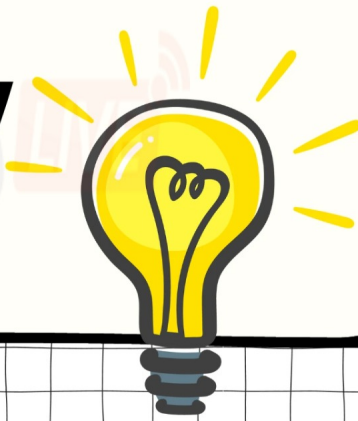
## GK Analogy Questions - Get 10 MCQs with Solutions

GK Analogy is an important topic of Logical Reasoning with a great presence in SSC exams, having a weightage of 1 - 2 questions. To master GK Analogy questions, a solid grasp of the concepts and rigorous practice are essential.

In this blog, we'll comprehensively explore the foundations and logical nuances of GK Analogy. We've included 10 real SSC exam-level questions to give you a preview of the challenges you'll face. Practice questions are categorized into different difficulty levels, ranging from 1 to 10. 1 denotes the least difficult and 10 denotes the most difficult. We have also given an estimated expected time to solve each question, to boost your preparation and speed. Moreover, you can also download GK Analogy questions and answers PDF by clicking on 'Download PDF' button above.

# GK Analogy

## Top 10 MCQs



[Source: KD Live]

## GK Analogy Questions

**Q:1** Select the option that is related to the third word in the same way as the second word is related to the first word.

FAO : Rome :: IMF :: ?

1. Vienna
2. Washington, DC
3. Geneva



## GK Analogy Questions - Get 10 MCQs with Solutions

4. Bern

[**Difficulty:** 3, **Estimated Time:** 15 seconds]

This question was an easy one, wasn't it?

**Q:2** Select the option that is related to the third word in the same way as the second word is related to the first word.

Father of Economics : Adam Smith :: Father of Modern computer :: ?

1. Airstophanes
2. Albert Einstein
3. Aristotle
4. Alan Turing

[**Difficulty:** 2, **Estimated Time:** 15 seconds]

Yeaah ! Go for it, easy one

**Q:3** Select the option that is related to the third word in the same way as the second word is related to the first word.

Fox : Canis Vulpes :: Mouse :: ?

1. Capra Hircus
2. Equas Caballus
3. Panthera Leo
4. Rodentia Muridae

[**Difficulty:** 2, **Estimated Time:** 15 seconds]

Come on, the clock is ticking!

**Q:4** Select the option that is related to the third word in the same way as the second word is related to the first word.

Kanchenjunga : Sikkim :: Nandadevi :: ?

1. Kerala
2. Madhya pradesh
3. Himanchal Pradesh
4. Uttrakhand

**GK Analogy Questions - Get 10 MCQs with Solutions**

[**Difficulty: 2, Estimated Time:** 15 seconds]

Time is very crucial for any exam. Always have an eye on the clock.

**Q:5** Select the option that is related to the third word in the same way as the second word is related to the first word.

Indonesia : Joko Widodo :: Nepal :: ?

1. Willem Alexender
2. Ramchandra Paudel
3. Bajram Bejaj
4. Melos Zeman

[**Difficulty: 2, Estimated Time:** 15 seconds]

You need to focus more now.

**Q:6** Select the option that is related to the third word in the same way as the second word is related to the first word.

Yamuna : Uttar Pradesh :: Hugli :: ?

1. West Bengal
2. Kerala
3. Karnatka
4. Mumbai

[**Difficulty: 3, Estimated Time:** 15 seconds]

This seems similar to the last one.

**Q:7** Select the option that is related to the third word in the same way as the second word is related to the first word.

Algeria : Dinar :: Albania :: ?

1. Lek
2. Dollar
3. Rupee
4. Dirham

[**Difficulty: 3, Estimated Time:** 15 seconds]



## GK Analogy Questions - Get 10 MCQs with Solutions

Don't watch the clock; do what it does.

**Q:8** Select the option that is related to the third word in the same way as the second word is related to the first word.

Jog Waterfalls : Karnataka :: Meenmutty Waterfalls : ?

1. Kerala
2. Goa
3. Tamilnadu
4. Maharastra

[**Difficulty: 3, Estimated Time: 15 seconds**]

This seems simple now.

**Q:9** Select the option that is related to the third word in the same way as the second word is related to the first word.

Panna National Park : Madhya Pradesh :: Bandipur National Park :: ?

1. Gujarat
2. Kerala
3. Karnataka
4. Uttrakhand

[**Difficulty: 3, Estimated Time: 15 seconds**]

Look! You are able to crack the logic.

**Q:10** Select the option that is related to the third word in the same way as the second word is related to the first word.

Belarus : Minsk :: Belgium : ?

1. Brussels
2. Ottawa
3. Manama
4. Vienna

[**Difficulty: 3, Estimated Time: 15 seconds**]

Hurray!! you are now master in this topic.

## GK Analogy Questions - Get 10 MCQs with Solutions

Dive into detailed solutions and discover how to tackle even the trickiest questions. You'll soon find them easy and intriguing, adding depth to your learning experience.

## Answer Key of GK Analogy Questions

1. (2)	2. (4)	3. (4)	4. (4)	5. (2)
6. (1)	7. (1)	8. (1)	9. (3)	10. (1)

We've explored various aspects of the same topic together. If you found it easy, that's fantastic! But if you faced challenges, don't worry—detailed solutions are here to clear any doubts and enhance your grasp of the topic.

## Solutions of GK Analogy Questions

**Q:1** The correct answer is **Option 2** i.e. **Washington, DC**

The logic used here is: Organizations of the United Nations and their headquarters

FAO headquarters is in Rome.

Similarly,

IMF headquarters is in Washington, DC.

Hence, the correct answer is **Washington, DC**.

**Q:2** The correct answer is **Option 4** i.e. **Alan Turing**.

The logic used here is: Father of various Fields.

Father of Economics is Adam Smith.

Similarly,

Father of Modern Computer is Alan Turing.

Hence, the correct answer is **Alan Turing**.

**Q:3** The correct answer is **Option 4** i.e. **Rodentia Muridae**.

The logic used here is: Scientific Name of Animals



## GK Analogy Questions - Get 10 MCQs with Solutions

Scientific name of Fox is *Cannis Vulpes*.

Similarly,

Scientific name of Mouse is *Rodentia Muridae*.

Hence, the correct answer is '**Rodentia Muridae**'.

**Q:4** The correct answer is **Option 4** i.e. **Uttarakhand**

The logic used here is: Highest peak and their places

Kanchenjunga peak is located in Sikkim.

Similarly,

Nanda Devi Peak is located in Uttrakhand.

Hence, the correct answer is '**Uttrakhand**'.

**Q:5** The correct answer is **Option 2** i.e. **Ramchandra Paudel**

The logic used here is: President and their countries

Joko Widdod is the president of Indonesia.

Similarly,

Ramchandra Paudel is the president of Nepal.

Hence, the correct answer is '**Ramchandra Paudel**'.

**Q:6** The correct answer is **Option 1** i.e. **West Bengal**

The logic used here is: River and their States

Yamuna is located in Uttar Pradesh.

Similarly,

Hugli is located in West Bengal.

Hence, the correct answer is **West Bengal**.



## GK Analogy Questions - Get 10 MCQs with Solutions

**Q:7** The correct answer is **Option 1** i.e. **Lek**

The logic used here is: Country and their Currencies

Dinar is currency of Algeria.

Similarly,

Lek is the Currency of Albania

Hence, the correct answer is '**Lek**'.

**Q:8** The correct answer is **Option 1** i.e. **Kerala**

As Jog Waterfalls is situated in Karnataka.

Similarly,

Meenmutty Waterfalls is situated in Kerala.

Hence, **Kerala** is the correct answer.

**Q:9** The correct answer is **Option 3** i.e. **Karnataka**

The logic used here is: National park and their place

Panna national park is located in Madhya Pradesh.

Similarly,

Bandipur National park is located in Karnataka.

Hence, the correct answer is '**Karnataka**'.

**Q:10** The correct answer is **Option 1** i.e. **Brussels**

Minsk is the capital of Belarus.

So, Brussels is the capital of Belgium.

Hence, **Brussels** is the correct answer.



## STUDY CONTENTS THAT GET YOU SELECTED

**FREE  
PDF**



**5 LAKH+ STUDENTS**  
Already enrolled with our  
selection focused courses.



**30+ EXPERT INSTRUCTORS**  
Our instructors are the best  
In the industry



**10000+ HOURS OF VIDEOS**  
All videos are well-explained for you  
to get every bit out of the videos

### GK Analogy Questions - Get 10 MCQs with Solutions

Congratulations on completing 10 GK Analogy questions of varying difficulty levels. Your dedication to practice is commendable and will undoubtedly enhance your Logical Reasoning skills. Comment your thoughts below and let us know how was your experience practicing these specially curated questions for you. If you have any doubts, you can ask in the comment section and we'll be right there with answers in no time. Keep up the great work, and you'll be well-prepared to tackle similar challenges in the exams. **KD Live** will be here with with top 10 questions from different topics, on a daily basis. Stay tuned!



Follow us on



Address : 1997, Mukherjee Nagar, 110009

Email : [online@kdcampus.org](mailto:online@kdcampus.org)

Call : +91 95551 08888

Download the App

